

PosWise

Stock it up ... Cash it in

PosWise - an innovative and user friendly Point of Sale System designed for all trading outlets...

Windows based - 32 Bit Software
 GUI Interface with Multi Tasking
 Single or MultiUser Environment
 Powerful Access Controls
 and Security Features
 Fully Integrated with Fiscal Printer

PRODUCT FEATURES

Sales Module

- Customer Register
- Cash / Credit Sales
- Line / Overall Discounts
- Quotations
- Sales Returns
- Refunds
- Credit card / Voucher sales

Debtors Module

- Debtors Ledger
- Debtors Opening Balance
- Receipts

Purchases Module

- Vendor Registers
- Local Purchase Orders
- Purchase Bills
- Cash Purchase
- Non Item Purchase Bills
- Purchase Returns

Creditors Module

- Stock Class / Category / Brand
- Stock Movements
- Stock List / Price List
- Stock Adjustments
- Price Adjustments
- Stock Item Bar Coding
- Stock Item Warranty Set Up
- Serial Number Tracking
- Pre-set Sales & Purchase Prices
- Multiple Pricing
- Inter Branch Deliveries
- Inter Location Transfers

MIS Module

- Payment Voucher
- Float
- Banking
- Open Cash Drawer

Set up & Security Module

- Company / Branches
- Employee / Employee Categories
- Branch / Countries / Towns
- Units & Shifts
- System Settings Control /Audit Trail
- Modular Access Control (control over users editing & deleting)

Set up & Security Module

- Company / Branches
- Employee / Employee Categories
- Branch / Countries / Towns
- Units & Shifts
- System Settings Control /Audit Trail
- Modular Access Control (control over users editing & deleting)

Reports Module

- Daily Cash / Credit Sales Summaries
- VAT Analysis
- Daily Profitability Report
- Collections Report
- Sales by Item Details / Item Grouping
- Sales by Rep / Customer Detail
- Stock Valuation / Movements
- Price List / Re-order List / Expenses Summary
- End of Day X and Z reports
- Profit and Loss report
- Over 30 MIS Reports

T.R.A. Approved

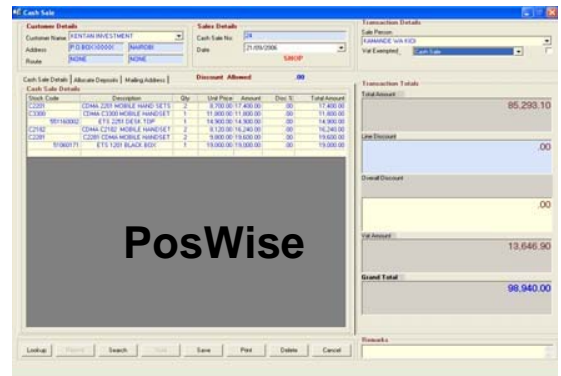


Fiscal Printer Datacs FP2000

- High Speed Low Noise Thermal Printer
- USB & RS232 Fiscal Communication
- 80 mm paper roll width
- Electronic Journal
- Easy Menu Driven Operation

General Features

- Single & / or Multi-User
- Multiple location / Multi Branch Set up
- Print Till reports Option
- Integrated Bar Code generation & Printing Option
- Option for POS peripherals - Receipt Printer, Cash Drawer, Customer Pole Display, Bar Code Scanner / Printer
- On-Line help & comprehensive User Guide
- Option for connecting to SYBASE SQL Database
- Full keyboard functionality with minimum key-strokes for data entry
- Powerful global and voucher level search facilities
- And so much more



Back up Utility

- Easy Backing up of Data
- Option of Re-linking to previous database
- Restore Previous Backup

Archive Utility

- Option to Archive data
- Generate opening balances per any date

Branch Network Consolidation

- Inter-branch stock transfer updates
- End-of-day head-office summaries of all daily transactions
- Easy upload / transfer of new items, customers or VAT rates
- See Illustration at the back

Developed and Supported By

 Total Fiscal Solutions

Dar es Salaam – 4th Floor Wing A, NSSF Waterfront Ho use, Sokoine Drive|P.O.Box 20729|Tel: 2125330-1 / 0755 225970|

Email: dar@totalsolutions.co.tz

Arusha – Plot No 36, Engira Road|P.O. Box 12611| Tel: 027 254 4852 / 0732 971251/ 0756 685855|

Email: arusha@totalsolutions.co.tz