

PosWise

Stock it up ... Cash it in

PosWise - an innovative and user friendly Point of Sale System designed for all trading outlets...

Windows based - 32 Bit Software
 GUI Interface with Multi Tasking
 Single or MultiUser Environment
 Powerful Access Controls
 and Security Features
 Fully Integrated with Fiscal Printer

PRODUCT FEATURES

Sales Module

- Customer Register
- Cash / Credit Sales
- Line / Overall Discounts
- Quotations
- Sales Returns
- Refunds
- Credit card / Voucher sales

Debtors Module

- Debtors Ledger
- Debtors Opening Balance
- Receipts

Purchases Module

- Vendor Registers
- Local Purchase Orders
- Purchase Bills
- Cash Purchase
- Non Item Purchase Bills
- Purchase Returns

Creditors Module

- Stock Class / Category / Brand
- Stock Movements
- Stock List / Price List
- Stock Adjustments
- Price Adjustments
- Stock Item Bar Coding
- Stock Item Warranty Set Up
- Serial Number Tracking
- Pre-set Sales & Purchase Prices
- Multiple Pricing
- Inter Branch Deliveries
- Inter Location Transfers

MIS Module

- Payment Voucher
- Float
- Banking
- Open Cash Drawer

Set up & Security Module

- Company / Branches
- Employee / Employee Categories
- Branch / Countries / Towns
- Units & Shifts
- System Settings Control /Audit Trail
- Modular Access Control (control over users editing & deleting)

Set up & Security Module

- * Company / Branches
- * Employee / Employee Categories
- * Branch / Countries / Towns
- * Units & Shifts
- * System Settings Control /Audit Trail
- * Modular Access Control (control over users editing & deleting)

Reports Module

- * Daily Cash / Credit Sales Summaries
- * VAT Analysis
- * Daily Profitability Report
- * Collections Report
- * Sales by Item Details / Item Grouping
- * Sales by Rep / Customer Detail
- * Stock Valuation / Movements
- * Price List / Re-order List / Expenses Summary
- * End of Day X and Z reports
- * Profit and Loss report
- * Over 30 MIS Reports

K.R.A. Approved

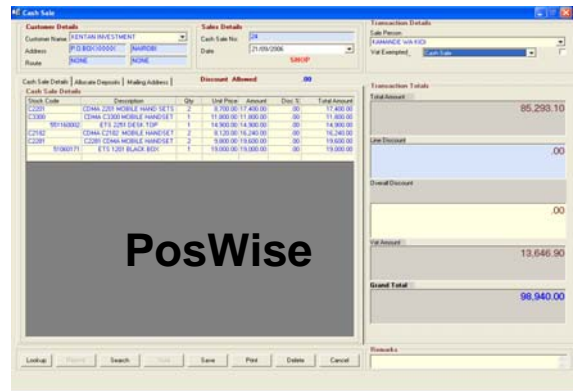


Fiscal Printer TSL FP05

- * High Speed Low Noise Thermal Printer
- * USB & RS232 Fiscal Communication
- * 80 mm paper roll width
- * Electronic Journal
- * Easy Menu Driven Operation

General Features

- * Single & / or Multi-User
- * Multiple location / Multi Branch Set up
- * Print Till reports Option
- * Integrated Bar Code generation & Printing Option
- * Option for POS peripherals - Receipt Printer, Cash Drawer, Customer Pole Display, Bar Code Scanner / Printer
- * On-Line help & comprehensive User Guide
- * Option for connecting to SYBASE SQL Database
- * Full keyboard functionality with minimum key-strokes for data entry
- * Powerful global and voucher level search facilities
- * And so much more



Back up Utility

- * Easy Backing up of Data
- * Option of Re-linking to previous database
- * Restore Previous Backup

Archive Utility

- * Option to Archive data
- * Generate opening balances per any date

Branch Network Consolidation

- * Inter-branch stock transfer updates
- * End-of-day head-office summaries of all daily transactions
- * Easy upload / transfer of new items, customers or VAT rates
- * See Illustration at the back

Developed and Supported By

Total Solutions
 We know IT!

Level 3, Ameer Arcade (formerly Rank Xerox Hse), Parklands Rd, Westlands

Tel: 3748347/92, 3749056/7/8, 3747007. Fax: (+254 20) 3749058

E-Mail: info@totalsolutions.co.ke Website: www.totalsolutions.co.ke