

Production

Manage production in a demand-driven environment

View work in progress and make any adjustments to avoid cost overruns

Graphical scheduling

Maximizing resource utilization with drag-and-drop graphical rescheduling

Take control

Optimize production flow by planning effectively and streamline inventory management based on demand and forecasting

Accurate Just in Time delivery

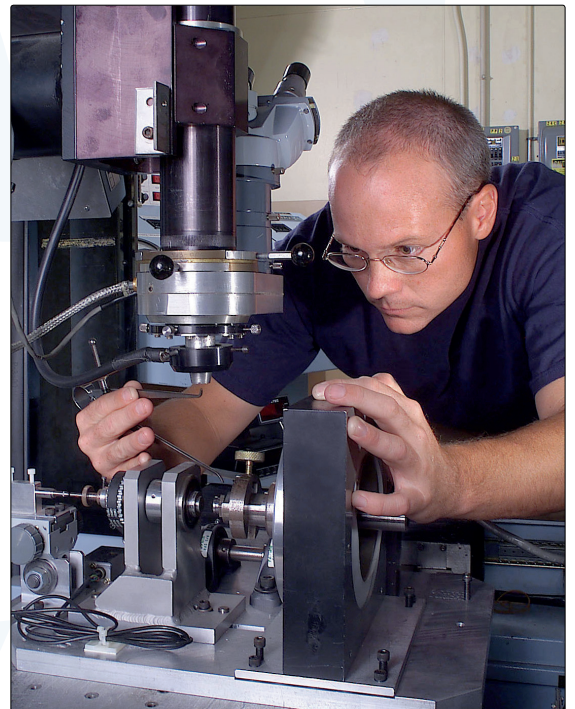
Track and manage inventory levels and provide reliable promises for delivery

Quality Control

Perform quality controls on your produced products

Multi platform

Windows, Linux, Mac and Symbian



SOFTWARE
SATISFACTION
AWARDS 2008



The World's Best Business System

Optimise production capacity from raw materials through final product

Enterprise by HansaWorld's integrated Production module provides you with the tools to manage your manufacturing processes easily and efficiently.

With Enterprise by HansaWorld Production you can boost operational efficiency and effectively manage production, including production orders, bills of materials, supply planning and materials requirements planning. All processes are integrated in one system.

Recipes

Enterprise uses a concept called Recipes for assembly management, bill of materials and formulations. Recipes control:

- which raw materials or sub-assemblies will be used for finished goods or other sub-assemblies
- which costs will be used during the Production process for cost accounting
- how long the Production process is planned to take
- minimum and normal production quantities, also to assist in the planning process.

Standard labour, overhead allocations, and any other costs can be included on Recipes.

Multi-level assembly reporting includes:

- listings of which raw materials are needed for each sub-assembly or finished item, and at which level
- listings of which raw materials and sub-assemblies are required for a specific finished item or sub-assembly
- which sub-assemblies or finished items use a specific raw material or sub-assembly

- costs associated with each sub-assembly or finished item
- how many of a specific sub-assembly or finished item can be produced.

Machines, Machine Usage and Capacity Planning

Machines are set up in Enterprise's Fixed Asset module. This controls not only the accounting for the machine, with different rates for automated depreciation calculations and for tax reporting, and a variety of pieces of relevant data about the machine, but also allows costs to be set for each hour the machine is running, and each hour the machine is idle.

To assist in the planning process, you can set which machines will support the production of each Recipe. If it is ever necessary to produce a sub-assembly or finished item on a machine other than the default, Enterprise can be configured to use a different Recipe, thereby reflecting the different speeds or capacities of each machine.

The planning process is brought together by Production Orders. Any work that is to be scheduled needs to be entered as a Production Order. Enterprise then automatically allocates Production Orders to default machines, and automatically assigns a place in the production queue. Both these allocations can be overridden manually. The schedule for machines can then be viewed from the graphical Resource Planner. Drill down from individual machines to specific Production Orders. Rearrange the schedule by drilling down and running a routine to reassign

Item	Specification	In	Out	Rel.	I-cost	W-cost
1	SA0001	Semi Finished Fabric	0.322			0.00
2	RM0002	DyeD	0.322			90.00
3	SA0002	Finising Chemicals	0.393			100.00
4	FG0001	Finished Fabric		1.00		68.28
5						
6						
7						

Queue Positions (you specify which Queue Position you want the current Production Order assigned to), or by drag and drop to another machine.

Production Orders also store both the total planned duration of the specific assembly, and the actual time taken - this latter time is automatically entered by Enterprise when the Production Order is marked as Finished.

Production

The Production record in Enterprise performs the changing of stock quantities (decrementing raw materials and incrementing assemblies or finished goods), and any associated accounting. Enter onto the Production how many of a particular Recipe you want to produce, and Enterprise will split serial numbered items down to separate lines for each serial number. There is even a function for Enterprise automatically to generate the serial numbers for each line.

Enterprise handles wastage by allowing Productions to be discarded. The user is forced to enter a reason for the discard - from a selection of standard problems previously defined. The Inspector of each batch is also recorded. Alternatively wastage and by-products can be quantifiable components of a completed Production.

Productions can be created automatically from Production Orders. This function is sensitive to batch sizes already predefined in the software, when items are batch tracked. Alternatively you can pull off batches as they are produced, or whenever you need to increment stock. Assemblies and Finished Goods can even be "disassembled" - this creates a new Production with the reverse entries from the original Production.

For "specials", it is not mandatory to put a Recipe on a Production. Entries of raw materials (in) and assemblies/finished items (out) can be made directly to the Production, thereby reducing the duplication between the Recipe and the Production.

Standard reports include answers to such questions as:

- Are there enough raw materials to make a range of Production?
- Which raw materials purchases must be made to support a range of Productions?

Just In Time Production

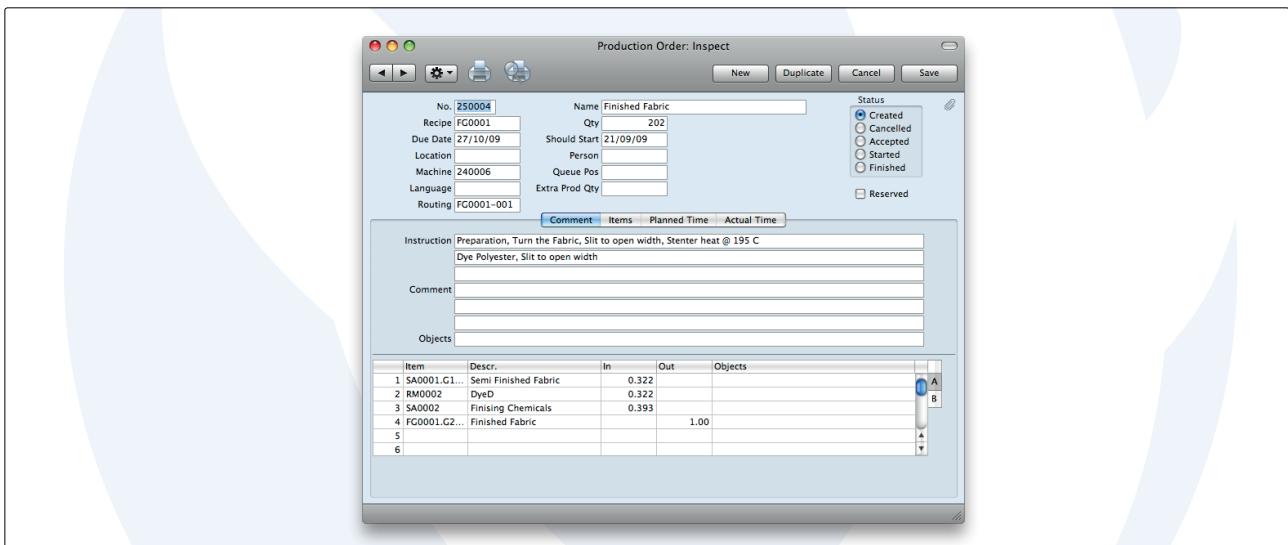
Enterprise provides automated features for forward purchases of raw materials, and scheduling, all from Sales Orders. Lead times can be stored for each component item, with different lead times available for each supplier. Default suppliers for each item can also be set. Similarly the standard length of time to manufacture is stored on each Recipe, for use on Production Orders or Productions. There is a batch routine that brings this all together, by working back from the scheduled delivery date, and creating forward Production Orders (for example) to schedule the manufacture in time to deliver by the scheduled delivery date, and creating forward Purchase Orders in time to meet the scheduled Production Orders.

"The complexities of our manufacturing operations require us to drill down to a very detailed level of analysis. Using Enterprise we can handle large volumes of stock at any one time and cope with component variations in each bill of material such as micrograms, grams, millilitres, or litres. In addition, we are very easily able to attribute individual batch numbers to every single item, which means we have tight control over stock traceability - this adds significantly to our bottom line and our quality control functions."

Jude Prophet, Newmarket Laboratories

Materials Requirements Planning (MRP)

There are several reports and batch routines to assist in the materials purchasing process. Enterprise includes an entire module to assist in this aspect of the purchasing process - when purchases are based on forecast sales. This enables you to make a temporary capture of the current stock position, and forward sales and purchase order books,



Modules

- Business Alerts
- Cash
- Cheques
- Conferences
- Consolidation
- Contracts
- Course Booking
- Credit Management
- CRM
- Customs
- EDI
- Email
- Expenses
- Fax
- Fixed Assets
- Group Calendar
- Hotel
- Internal Stock
- Jewellery
- Job Costing
- MRP
- Nominal Ledger
- Point of Sales
- POS Offline
- Pricing
- Production
- Purchase Ledger
- Purchase Orders
- Quotations
- Rental
- Report Generator
- Resort
- Resource
- Planning
- Restaurant
- Sales Ledger
- Sales Orders
- Service Orders
- Share Trading
- SmartView (Business Intelligence)
- Stock
- Task Manager
- Telephone Log
- Warehouse Management
- Webshop and CMS

Technologies

- Business Communicator (Asterisk, Skype and TAPI)
- Forms Designer
- HAL Customisation language
- Intelligent Routing
- Interfacing Toolkit
- Massive Cacheing
- ODBC
- SmartApps Designer
- Wide-area Networking

Internet Services

- Address Lookup
- Credit Card Payment
- Credit History
- E-invoicing
- Electronic Bank Services
- Electronic VAT Return
- Exchange Rate Lookup
- Postcode Lookup

Company profile

HansaWorld is a major international software company specialising in business applications. The group employs around 300 staff in a strong network of daughter companies and distribution partners worldwide. There are 19 offices spanning all the major continents, allowing HansaWorld to offer international implementations with a single point of contact across many countries.

The group was founded in Sweden in 1988, by Managing Director Karl Bohlin. While the group is now headquartered offshore, the largest offices and much of the development effort takes place in Scandinavia and around the Baltic Sea. The products are available in 29 languages and work with almost all computers and operating systems. The vast majority of the 74,000 HansaWorld installations are for small and medium sized businesses, but also many subsidiaries of large international companies.

HansaWorld provides a local product manager for each market where it actively sells Enterprise. The product manager is responsible for translations (if required), localisation for statutory and commercial practices, and ongoing quality control.

Product Strategy

Enterprise's advanced and successful user interface was first developed for Apple Macintosh in 1988. In 1994, when the program was ported to Windows, it had already been proved by thousands of users. HansaWorld's experience with international sales and modern technology puts it in the perfect position to meet the challenges of the next decade.

HansaWorld provides a wide range of technologies for e-business including internal and external email, several webshop solutions and PDA support. In addition, HansaWorld can help to build a corporate portal. Enterprise is developed using C++ as its programming language, and proprietary technology for database design and for network communication. This allows HansaWorld to have the same products available for several different operating systems, each version optimised for maximum performance.

Currently Enterprise is available for Windows 2000-XP, including Windows CE, Mac OSX, Linux and AIX, Symbian S60 and iPhone.

Windows 2000, Windows 2003, Windows CE, Windows XP are registered trademarks of Microsoft Corporation. Apple Macintosh and MAC OS are registered trademarks of Apple Computer Inc. xSeries, pSeries, iSeries and zSeries are registered trademarks of IBM Corporation. Copyright HansaWorld Ltd.

Certified HansaWorld Business Partner



HansaWorld UK Ltd,
Abbey Business Centres, 111 Buckingham Palace Road,
London SW1W 0SR, UNITED KINGDOM,
Tel. +44 (0)845 123 2732 E-mail: uk@hansaworld.com, www.hansaworld.com